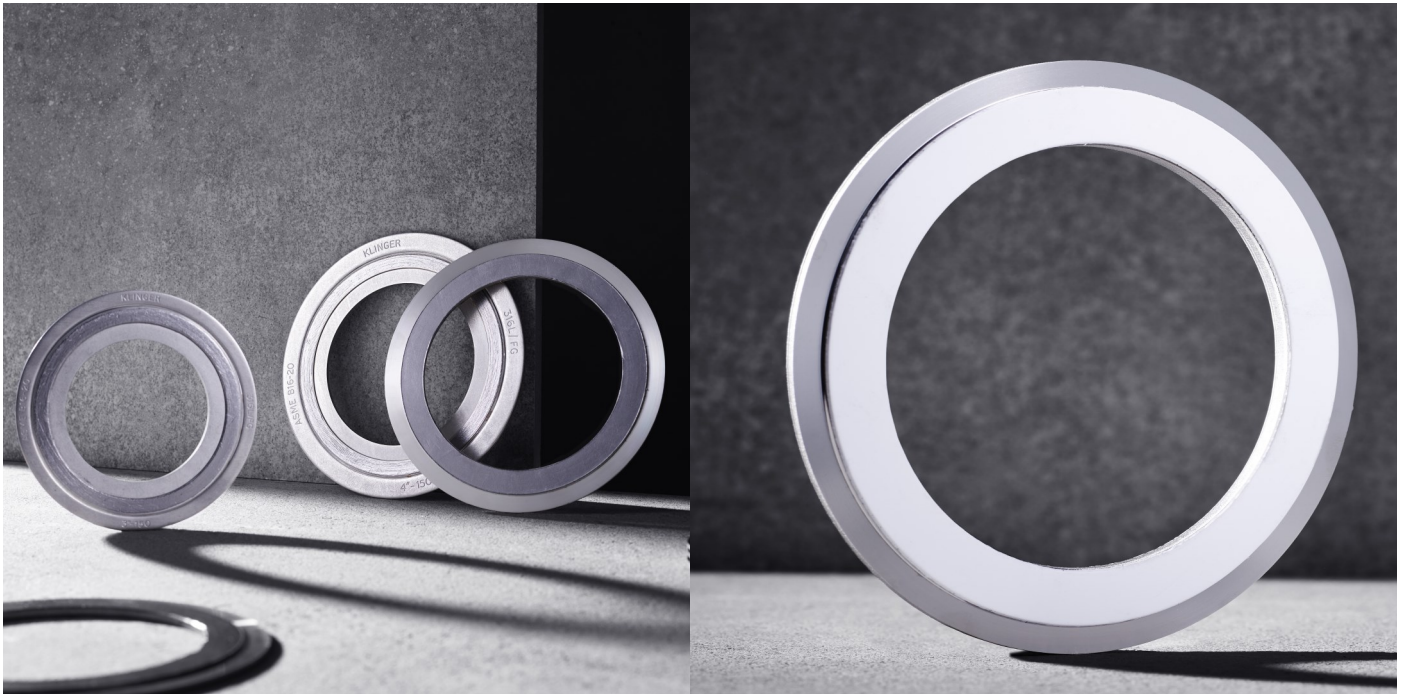


KLINGER MAXIPROFILE

Serrated Metal Gaskets



KLINGER MAXIPROFILE

Serrated Metal Gaskets

Core Design

- » Standard core design (Style LA) is parallel, which offers the advantages of even stress distribution across the gasket face.
- » Convex core designs (Style CA) are also available, which have a reduced depth of grooves towards the profile center.

General Properties

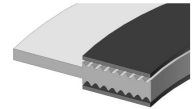
- » Wide range of seating stresses under which the seal is effected and maintained.
- » Can be used when there is insufficient bolt load to seal conventional gasket materials.
- » Easy to handle and fit.
- » Suitable for a wide range of operating conditions.
- » The soft facing layer prevents damage to the flange.
- » Can be refurbished with a new facing layer and reused.

Applications

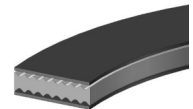
- » Heat exchanger and vessel applications
- » High and low temperatures
- » Pressures of up to 250 bar / 3625 psi
- » Low bolt loads
- » Small flange widths
- » Damaged flanges

Styles

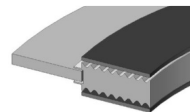
LA1 / CA1
Integral centering ring



LA2 / CA2
No centering ring



LA3 / CA3
Floating centering ring



Materials

Facing Material	Max Temp
Flexible Graphite	1020°F (550°C)
PTFE	500°F (260°C)
Mica	1830°F (1000°C)

Core Material	Max Temp
Stainless Steel 304, 316L....	1020°F (550°C)
Alloys 400, 200	1110°F (600°C)
Alloy 600	1650°F (900°C)
Alloys 625, 825, B-2	840°F (450°C)
Titanium.....	660°F (350°C)

KLINGER Thermoseal

2350 Campbell Road, Sidney, Ohio 45365
Tel: +1 937 498 2222

3803 S. Sam Houston Parkway W., Houston, Texas 77053
Tel: +1 713 997 8111